

MONTHLY MEMBERSHIP PROGRESS REPORT

District 3233G1

Results as of: 10/31/2019

GMT:

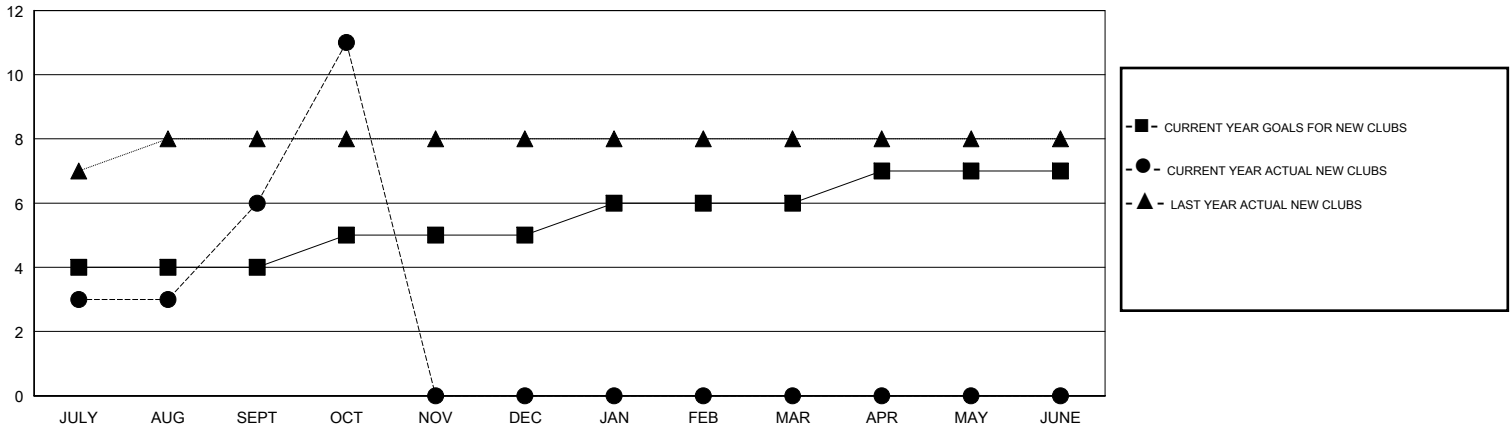
LOCATION INDIA

GMT CA

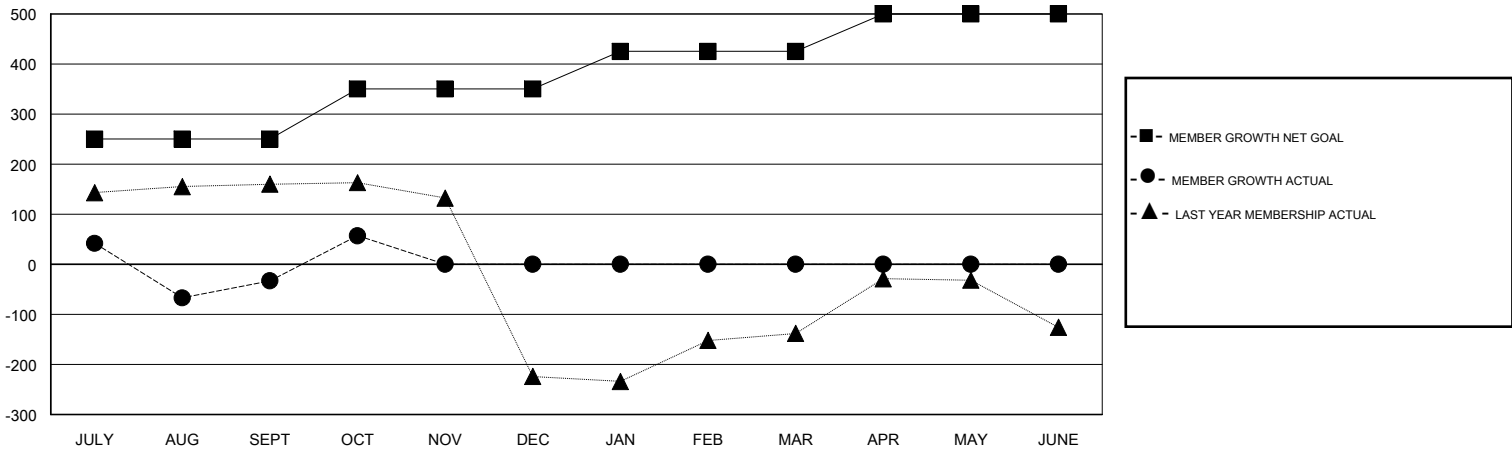
Clubs			
RESULTS FOR 2019-2020			
QUARTER	NEW CLUB GOAL	NEW CLUBS	DROPPED CLUBS
JULY/AUG/SEPT	4	6	1
OCT/NOV/DEC	1	5	1
JAN/FEB/MAR	1	0	0
APR/MAY/JUNE	1	0	0

Members			
RESULTS FOR 2019-2020			
QUARTER	MEMBER GROWTH NET GOAL	MEMBER GROWTH ACTUAL	DROPPED MEMBERS ACTUAL (including transfers)
JULY/AUG/SEPT	250	128	151
OCT/NOV/DEC	100	181	59
JAN/FEB/MAR	75	0	0
APR/MAY/JUNE	75	0	0

GOALS AND ACTUAL NEW CLUBS CUMULATIVE



GOALS AND ACTUAL MEMBERS CUMULATIVE



DROPPED CLUBS: 2	33 CLUBS OF 141 ADDED 1 OR MORE NEW MEMBERS	GENDER DISTRIBUTION MALE 2,788 (56.57%) FEMALE 2,140 (43.43%)
DROPPED MEMBERS DECEASED 1 CLUB CANCELLED 161 OTHER 48 <hr/> TOTAL 210	CLICK HERE FOR CUMULATIVE MEMBERSHIP DATA	TOTAL FAMILY UNIT MEMBERS 2,364 FAMILY MEMBERS PAYING HALF DUES 1,452